

Becks Evangelical Lutheran Church
444 Becks Church Road
Lexington, NC 27292
(336) 249-2056
Fax: (336) 249-0325
Email: info@becks-lutheran-church.org

Pastors: Revs. Ray and Ruth Ann Sipe
Organist & Choir Director: Stephen Gourley
Office Administrator: Kimberly Hedrick
Office Hours: Monday – Friday 8:00 a.m. – 2:30 p.m.
Pastors' Office Hours: Tues., Thurs. & Fri. 9:00 a.m. – 1:00 p.m.
website: www.becks-lutheran-church.org

March 2009 Newsletter

With a cross of ashes on our forehead, we began the 40 days of Lent on Ash Wednesday. During Lent, we notice several changes in our worship. We change the colors to purple, signifying the somberness of the Lenten season. And as we celebrate renewal of our baptism, we begin each service with *Thanksgiving for Baptism*, rather than *Confession and Forgiveness*. In fact, while we confessed our sins on Ash Wednesday, we will not receive absolution until Maundy Thursday – leaving us to dwell on our sinfulness during this entire season of penitence.

Why do we celebrate Lent? The ELCA website (www.elca.org) offers this explanation:
As early as the mid-fourth century, Christians have observed a time of preparation before the Easter celebration. The Lenten season begins on Ash Wednesday and lasts for 40 days. The forty days of Lent recall the 40 day fast of Jesus in the wilderness after his baptism (Matthew 4:2, Luke 4:1-2) and Moses' 40 day fast on Mount Sinai (Exodus 34:28). It is a time of simplicity and preparation.

Simplicity – a time for us to simplify our lives and our worship; to examine those things that make our lives complicated. For worship, we will not sing the hymn of praise, or chant the preface during the communion prayers, and there will be no joyous song after communion. Preparation - our hymns and worship will be more penitential, with an emphasis on our sinfulness. The baptismal font will remain in front of the chancel steps filled with water, reminding us of our baptism. We have laid the Alleluias to rest for 40 days, not to emerge or be used in worship again until Easter morning.

During Lent, we approach the cross, but we are not yet there. The cross is our destination, but it does not become our focus until Holy Week. The cross is present, but for now our focus is on our sinful nature that made Jesus' sacrifice on the cross necessary. We focus on our sinfulness, our dustiness, our need for redemption. We pray, we fast, we provide service to others as penitence for our sins, and we journey to the cross with Jesus.

Our forty days may seem like an eternity, but we already know what happens in the end. We already know the end of the story. We already know the Good News, but we do not celebrate that now – not just yet. For now, we wait, repenting of our sins, and contemplating our dustiness.

Pastor Ray

Pastor Ruth Ann

Included in this newsletter you will find a simple Finger Labyrinth, which you may find helpful as an aid to quiet, contemplative prayer on your Lenten Journey.



*Easter Lilies are available at \$11.00 each.
The deadline for reservations is March 22, 2009.
Order forms are available at both entrances of the church.*



Touching Davidson County with Love is an ecumenical, county-wide service project which will be held on April 25. Everyone is invited to participate! Volunteer registration forms are in your mailbox, and extras are available on the community bulletin board if you know someone else who would like to participate. Please complete this form and turn it in to Jamie Everhart or the church office by March 5 to register for this event. If you would like to purchase a T-shirt, please turn in your money with your registration form. Any questions, call Jamie Everhart at 239-0041.

PROPERTY TAX UPDATE

PROPERTY TAX RELIEF---are you totally disabled or are you over 65? Is your income under \$25,000? If so, you may be eligible for a reduction to your property tax bill.

2008 FEDERAL INCOME TAX

Also, if you pay property tax on any land or home, this can be used as a deduction to your 208 income tax even if you do not itemize your deductions.

If you have questions, please talk to Alan Hoppensteadt.

Agape † Kure Beach Ministries **Web site: www.agapekurebeach.org**
Newsletter information for **March 2009**

UP-COMING EVENTS:

- ❖ **Summer Camp** Register now. Brochures have been sent to your church. Info available on web site.
- ❖ **Summer is coming!** We are searching for quality Christian adults to serve as counselors on our 2009 summer staff. Applicants must be 19 years minimum, love kids, and want a fun and exciting challenge.
- ❖ **Work Day at Camp Agapé is April 4.** Stay overnight Friday, work Saturday. Breakfast and lunch are provided. Building vermicomposting frames, spreading woodchips on trails and many other projects. Must have reservations E-mail ACEed@agapekurebeach.org
- ❖ **4. Side by Side - April 5-9, 2009** Break Away to Kure Beach - High School Alternative Spring Break. Cost: \$250.00 Spend the week working side- by-side with a differently-abled adult camper. Join a small group of high school aged friends and learn what service ministry and community is all about. Contact Alissa.
- ❖ **Open House at Camp Agapé. 1:30-4:30 May 3rd. Dedication of New Dining Hall and EE Facility at 3:30.** This is a great opportunity for the whole family to come experience some of the things that happen in our summer programs and see the new facility.
- ❖ **Mother – Daughter overnight retreat May 8-9, 2009.** Celebrate your relationship with the women in your family. For Mothers and Daughters of all kinds and all ages. Contact Alissa at program@agapekurebeach.org or call Camp Agapé for details.

Contact Camp Agapé: 919-552-9421 E-mail: agape@agapekurebeach.org

Contact Kure Beach office: 910-458-0783 E-mail: kurebeach@agapekurebeach.org

Circle of Love News

Circle of Love met on Tuesday evening, February 3, 2009. There were 12 members present. Holly Dorton opened the meeting with devotions and prayer.

Wanda Beck presented a program relating to Heart Month and the importance of having and maintaining Healthy Hearts. She gave 2 Valentines to each member present. One for them to keep for themselves and another for them to send to someone special in their life.

Becks will host the World Day of Prayer Service on Friday, March 6.

Circle of Love will provide the meal for the midweek Lenten Service on March 4. The meeting adjourned with the Commitment Statement. Cornelia Briggs and Martha Leonard were hostesses for this month. Delicious refreshments were served and a time of fellowship was had by the group.

Circle of Faith News

Circle of Faith will meet Sunday, March 1st at 3:00 p.m. in the Complex. Pearlie Mae Tysinger has this month's program. Linda Barefoot and Martha Briggs are Hostesses. Don't forget to bring your rice!



The Circle of Hope met at the home of Cornelia Briggs in February and began a book study of Lutheran Questions, Lutheran Answers. We enjoyed the potluck meal, sharing our thoughts, and learning more about Lutheran teachings. Our next meeting will be on Monday, March 16th at 6:00 pm in the Complex with Angie Hall as our hostess for our book study and potluck supper. Please join us as your schedule permits!



WELCA SPRING GATHERING on March 28

March 28 is the date for the Women of the ELCA's Spring Gathering. St. Luke's Lutheran Church will host the event, beginning at 9:30 a.m. and ending after lunch.

Registration is \$7.00 and is due by Sunday, March 15.

Please let Becky Hoppensteadt or Patti Lovell know if you plan to go and get them your money by March 8. The theme for the gathering is *Caretakers of Creation* and the program is entitled *Abigail, A Bold Woman of Courage*.

Our offering will go to the *Me Fine Foundation* whose mission is "to voluntarily provide necessary resources and financial assistance to parents and caregivers with children being treated at Duke and UNC Children's Hospitals." The Foundation is in memory of Folden Lee, IV, a two year-old going through many tests and treatments for AML leukemia, who when asked, "Folden, How are you today?" always said, "Me fine." Please plan to attend this morning of fellowship with our conference sisters.

MARCH---one busy month for our Women of the ELCA!!!

March will be a busy month for the Women of the ELCA. Here are some dates to remember:

March 1---Circle of Faith Meeting at 3pm

March 3---Circle of Love Meeting at 7pm

March 4---Prayer Shawl ministry at 1:30pm

Circle of Love provides Lenten Meal

March 6---WORLD DAY OF PRAYER at Becks 7pm

March 11--- Circle of Faith provides Lenten Meal

March 15--- Registration (\$7.00) due for Spring Gathering

March 16--- Circle of Hope 6pm at Complex

March 18--- Prayer Shawl ministry at 1:30pm

March 22--- ASK Program at 4:00 pm in the FEB

March 28--- Spring Gathering at St. Luke's Lutheran Church at 9:30 a.m.

WHEW!!! Mark these dates on your calendar so you won't miss any of the **FUN!!!**

Young at Heart

The Young at Heart met at Lexington Style Trimmings on February 4. Fifteen members were present. Ophelia had devotions: "Accept People as They Are" followed by table grace.

Sylvia Beck and Pastor Ray are sick and there are no birthdays to celebrate this month. The trip to Wohlfahrt House Dinner Theater in Virginia has been canceled for March. No meeting next month; our next meeting will be April 1, 2009.

We enjoyed desserts furnished by Wanda Beck and Ophelia Walker. Next meeting Maxine Mull and Janice Warner will provide the dessert.

Ophelia Walker, President

Betty Jean Disher, Secretary



VISITATION MINISTRY

On March 29 at 2:00 p.m. there will be a special meeting for anyone who would like to be part of our visitation ministry. This will include all who are visiting now, those who would like to join, and those who would like to find out more about our visitation ministry.

Pastors Ray and Ruth Ann will provide training and answer questions about visitation with our shut-ins for those who are hesitant to do so. We will also talk about how best to set up a schedule to make it most convenient and comfortable for those who are making visits.

This is an important ministry here at Becks and we need your help and input so we can best serve those in our congregation who are not able to be with us on Sunday morning. The meeting will last about an hour. Please consider joining us to learn how you can help. If you have any questions--- please see one of the pastors.

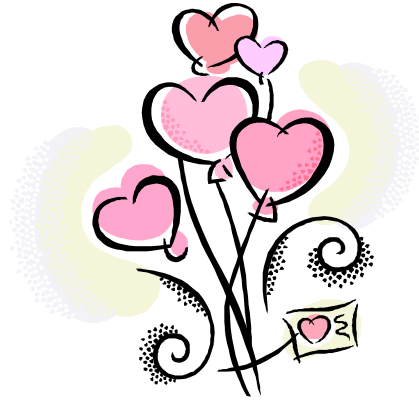


***Don't forget Daylight Savings
Time begins on Sunday, March 8!
Move your clock
ahead one hour.***

Youth News

The Junior, Middle and Senior Youth Groups met on Sunday, February 8. After games, lunch, and devotions together, each group met. The Junior Youth created beautiful Valentine gift bags and filled them with treats for our shut-ins. The Middle and Senior Youth met to plan a spaghetti supper fundraiser.

Thanks to everyone who supported our Middle & Senior Youth Valentine's Day Dinner! We hope that you enjoyed it. We raised almost \$500 that will provide funds for youth group trips and camp scholarships.



Our next meeting will be held on Sunday, March 8. We are planning an Ice Skating Trip for all ages after worship on Sunday, March 15.



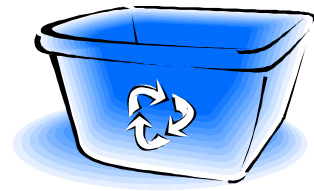
**God's Work.
Our Hands.
Go Green!**

The North Carolina Lutheran Youth Organization met in Assembly February 20-22 around this theme. Becks was represented by six youth members, accompanied by Pastor Ray and Pastor Ruth Ann. It was a wonderful opportunity for youth (and their adult advisors) from around the state to meet, study, pray, and have fun together. During several sessions, we learned more about recycling and energy conservation.

It also provides a great opportunity for us to publish a reminder about our recycling program and energy conservation policies here at Becks Lutheran Church.

Recycling

We are able to readily recycle a number of items that are used here at the church, including paper, cardboard, ink and laser cartridges, aluminum and tin cans, glass jars, and plastic containers. Please help us to practice good stewardship of creation!



Paper Boxes are available in the narthex and the Pastors' Classroom for recycling paper, such as bulletins. If you won't use or recycle them at home, please place any extra copies into one of these boxes to be recycled.

Cardboard Cardboard boxes must be dry and free from food residue. Please flatten them and place them in the pantry for recycling.

Aluminum Cans Aluminum cans are currently being collected for recycling by the Girl Scout troops. Please rinse these cans and place them in the trash cans located under the picnic shelter for recycling. Aluminum foil and aluminum pie pans are not recyclable.

Steel Cans Steel cans (including the tops) should be rinsed and placed in the large bin in the kitchen. Large cans may be saved for re-use, as well.

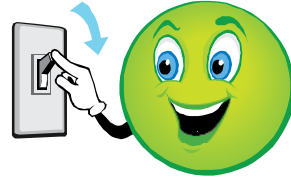
Glass Glass jars or bottles should be rinsed and placed into the large bin in the kitchen. Please remove all lids and place them in the trash.

Plastic Containers Only milk jugs and plastic containers marked with a 1 or a 2 may be recycled. Please rinse these containers and place them in the large bin in the kitchen. Lids are not recyclable – neither are plastics marked with other numbers (such as 3 – 7)!

Ink and Laser Printer Cartridges A box is located in the hallway of the FEB for ink cartridges. Place laser cartridges in their original cardboard box in the entrance hallway of the Complex.

Please understand that we are normally only able to recycle the materials used here at the church, but we certainly encourage you to recycle at home as well. If you are interested in recycling your household waste, but are unable to deliver it to the county recycling center, please contact the church office for assistance. Do not just bring items to church and assume that someone else will handle them for you!

Energy Conservation



When using the church, FEB, or office complex, please turn on lights only in the areas you will be using. Our thermostats are generally set for minimum heat or A/C. Please return thermostats to these settings. Keep exterior doors and doors between different areas of the building closed to conserve heat and air conditioning.

When you are ready to leave the building, please be sure to turn off all lights, reset the thermostats, and close and lock all doors.

ASK----What is it???

On March 22 at 4:00 p.m. the Women of the ELCA will be sponsoring a program called **ASK---Adults Saving Kids.**

This program's mission is to educate congregations and communities about the sexual exploitation of young people.

DID YOU KNOW...

- ... there are currently 600,000 pornographic websites.
- ... many youths who trade sex for money begin when they are 14 years old or younger
- ... nearly 6.5 million children in the US receive unwanted sexual materials via the internet.

The ASK program wants all to be aware that "the 'sex industry'--prostitution, pornography, and stripping-- seeks to lure youth into being sold as well as being customers."

Who should come to this program to get this information? EVERYONE---parents, grandparents, teens, anyone interested in protecting young people from being hurt and exploited. Sharon Johnson from Charlotte has been trained to present this material. It is information that we who are concerned and care about our young people need to have. Please mark March 22 on your calendar and plan to attend!



A FAMILY OF PRAYER

The book of Acts tells about a man named Cornelius. He was a Roman centurion from Caesarea who worshiped God. Through his encounter with Cornelius, Peter learned that God accepts everyone who fears him and does what is right.

Use the code below to see the example set by Cornelius and his family. Solve the math problems by using the grid. Then use the key to find the letter that matches each answer. Write the letter on the blank.

GRID	
A	B
2	4
C	D
6	5

KEY: a=7 e=8 i=10 o=9 u=11 y=6

"H e ___nd ___ll h___s f___m___l___
 A+C A+D A+D B+C A+D B+C A+B

w___r___ d___v___ t___nd
 A+C A+C A+C B+D C+D A+D

G___d-f___r___ng; h___ g___v___
 B+D A+C A+D B+C A+C A+D A+C

g___n___r___s l___ t___ th___s___n
 A+C A+C B+D C+D A+B B+D B+D A+C B+C

n___d ___nd pr___d t___ G___d
 A+CA+C A+D A+D A+B A+C B+D B+D

r___g___l___r l___." ___cts 10:2, NIV
 A+C C+D A+D A+B A+D

Answers: "He and all his family were devout and God-fearing; he gave generously to those in need and prayed to God regularly." Acts 10:2, NIV



Our 4th Annual Girl Scout Sunday is scheduled for Sunday, March, 8. Girl Scouts and their families will attend worship. Everyone is invited to a reception and program in the FEB after worship. -Daisy Troop #1672, Brownie Troop #862, and Junior Troop #61



Memorials & Honorariums

In honor of Martha Leonard; and in memory of Sandra Swing and Jerry Leonard, past youth advisors given by Benny Swing to the Youth Fund

In memory of Jerry Leonard given to the Middle Senior Youth by Kimberly Hedrick

***In memory of Jerry Leonard given to the Scholarship Fund by CR & Gail Younts
Richard & Mittie Jo Cushman***

In memory of Jerry Leonard given to the Budget by Davidson –Randolph County Chapter of Thrivent Financial for Lutherans

***Mr. & Mrs. Eddie Allred
New Bridge Bank
Becks Lutheran Men
Circle of Love
The Pastor's Class
Danny Beck
Wilma Byerly
Olin & Betty Jean Disher
Wilhelminia Fischer & Sherry Thompson
Robbie & Jeannie Harrison
Al & Becky Hoppensteadt
Rev. David & Pat Huddle
Mary Kuebler
Bob Leonard
Maxine & Tim Mull
Mary Ann Rachels
Mr. & Mrs. Dolan Smith
Pearlie Mae Tysinger
Velna Vawter
Roger & Mary Vawter
Arlene Walker
Roscoe & Ophelia Walker***

***In memory of Jerry Leonard given to the Building Fund by
Bob & Paula Applegate
Buddy Beck
Wanda Beck
Dell Frey
Jerry & Betty Gallimore***

Lenten Services

The Greater Lexington Area Ministerial Association will host a brief worship service each Wednesday at 12:00 noon at First United Methodist Church. Lunch follows.

Lenten Suppers and worship services will be held in the FEB. Supper will be served at 6:00 p.m. Bible study and a brief worship service will begin at 6:45p.m. (Choir practice will follow).

Wednesday, March 4
Wednesday, March 11
Wednesday, March 18
Wednesday, March 25
Wednesday, April 1

A Service of the Word for Healing will be held on Sunday, March 29 at 4:00 p.m.



Seder Meal on Wednesday, April 8 at 6:30 p.m.
Maundy Thursday worship services on Thursday, April 9
at 12 noon and 7:00 p.m.
Good Friday service on Friday, April 10 at 7:00 p.m.
More details will follow in the April Newsletter.



Many thanks to all of you for your cards, calls, and visits. They mean a lot to me. Thanks again for your concern, love to all.- Sylvia Beck

Many thanks to my church family for all the prayers, cards and food during my illness and Jerry's death. Your support has helped me to be strong. God bless you all. -Martha Leonard

Thank you Becks members for your continued support of the Congregation Assistance Fund, with your contributions during 2008 we were able to provide for families as listed below:

<i>Financial Assistance</i>	<i>Recipients</i>
<i>Utilities</i>	<i>19 families</i>
<i>Food (from the pantry here at church)</i>	<i>24 families</i>
<i>Community Assistance (Salvation Army, Positive Wellness Alliance, Davidson County Cancer Society, Central Davidson Middle School)</i>	<i>5 families</i>
<i>Medical expenses (prescriptions and medical supplies)</i>	<i>3 families</i>
<i>Rent</i>	<i>4 families</i>

All offerings received at Lenten services will go towards this fund.

Opportunity for a Better Life

Each year, more than 20,000 young people age out of the foster care system. This group is at a high risk of dropping out of school, unplanned pregnancies, poor health, criminal activity and homelessness.

With LFS Carolinas providing supervision and support to foster families who care for more than 500 children across the Carolinas each year, these numbers hit very close to home. It was in direct response to this issue that LFS Carolinas began Opportunity 4 Supervised Apartments (O4SA).

The O4SA program is designed to help young adults who are aging out of the system become self-sufficient. The program provides apartment living as well as the connections they need for education, employment, healthcare and supportive personal and community relationships.

Young adults who enter the program immediately begin working toward their independence. With assistance from Hampton Crossing Apartments in Durham, NC, each young adult signs their own lease and begins paying rent which starts at \$25 and goes up \$25 a month, capping at the total rent amount. Having their name on a lease allows them to build their credit while learning money management and budgeting.

In collaboration with Durham County Department of Social Services, the program gives young adults a comfort zone as well as independency enabling them to utilize the skills they have learned. At the same time, the program assists young adults in providing additional tools and services personalized to fit their individual needs and circumstances.

In this apartment setting, they will be assisted in continuing or discovering healthy interests, developing life skills, improving interpersonal communication and problem solving. The program will assist in cultivating support systems and ultimately will enable them to become productive members of their community.

To find ways you can volunteer to help young adults in the program contact:

Lutheran Family Services in the Carolinas

Opportunity 4 Supervised Apt (O4SA)

412 B2 E. Pilot St.

Durham, NC 27707

Phone (919) 682-8600 • Fax (919) 682-2828



Desktop Finger Labyrinth

Keep this labyrinth on your desk. When you are stressed and need to relax, use your finger to slowly trace the path into the center and then out to the entrance. The spiraling path of the labyrinth teaches us to slow down and refocus as we become more centered and balanced.



Acolyte: Caitlin Aberg Crucifier: Dakota Hedrick
Lector: Rhonda Gallimore Prayers: Brenda Sanders
Greeters: Roscoe & Ophelia Walker
Communion Assistants: Keith & Wendi Trexler
Nursery: Vickie Whitehead

Sunday	Monday	Tuesday	Wednesday	Thursday	Friday	Saturday
1 First SUNDAY OF LENT Buford Blankenship Team 3:00 p.m. Circle of Faith meeting	2	3 7:00 p.m. Circle of Love meeting	4 1:30 p.m. Prayer Shawl ministry 6:00 p.m. Supper 6:45 Bible Study & worship Choir practice will follow	5	6 World Day of Prayer 7:00 p.m. World Day of Prayer service and reception	7 DAYLIGHT SAVING TIME Don't forget to turn your clocks ahead 1 hour Lutheran Men FEB 8:00 a.m. to 4:00 p.m. FEB reserved 5:00 to 7:00 p.m.
8 Second SUNDAY OF LENT Terry Hedrick Team Girl Scout Sunday Youth meeting 2:00 p.m. Confirmation Class	9 FEB reserved 8:00 a.m. to 5:00 p.m.	10 FEB reserved 8:00 a.m. to 5:00 p.m.	11 FEB reserved 8:00 a.m. to 5:00 p.m. 6:00 p.m. Supper 6:45 Bible Study & worship Choir practice will follow	12 FEB reserved 8:00 a.m. to 5:00 p.m. 6:30 p.m. Finance Committee Meeting 7:00 p.m. Council Supper 7:30 p.m. Council Meeting	13 FEB reserved 8:00 a.m. to 5:00 p.m.	14 Feed the shelter
15 Third SUNDAY OF LENT Robbie Harrison Team Youth Ice Skating trip Men host the shelter	16 FEB reserved 5:30 p.m. Circle of Hope meeting @ the Complex	17 FEB reserved 6:00 p.m. Education Board meeting	18 FEB reserved 1:30 p.m. Prayer Shawl ministry 4:00 p.m. Worship Board Meeting 6:00 p.m. Supper 6:45 Bible Study & worship Choir practice will follow	19 6:30 p.m. Lutheran Men's Supper	20	21
22 Fourth SUNDAY OF LENT Alan Myers Team Youth Board Meeting 2:00 p.m. Confirmation Class 4:00 p.m. Ask program	23 FEB reserved 8:00 a.m. to 5:00 p.m.	24 FEB reserved 8:00 a.m. to 5:00 p.m.	25 FEB reserved 8:00 a.m. to 5:00 p.m. 6:00 p.m. Supper 6:45 Bible Study & worship Choir practice will follow	26 FEB reserved 8:00 a.m. to 5:00 p.m.	27 FEB reserved 8:00 a.m. to 5:00 p.m.	28 WELCA Spring Conference at St. Luke's Lutheran Church
29 Fifth SUNDAY OF LENT David Aldridge Team 2:00 p.m. Visitation Team Meeting 4:00 p.m. Service of Healing	30	31				